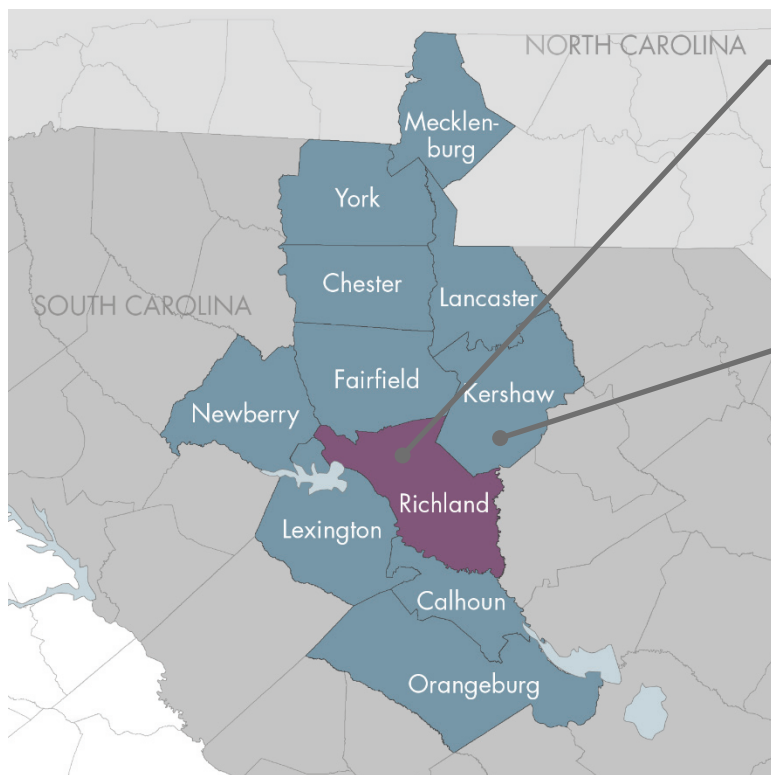




RICHLAND COUNTY



RICHLAND COUNTY






Civilian Labor Force (CLF): **199,987**
 % Change in CLF, 2016-2017: **-0.3%**
 Unemployment Rate, 2017 Avg.: **4.3%**

LABORSHED

Civilian Labor Force (CLF): **1,235,672**
 % Change in CLF 2016-2017: **1.7%**
 Unemployment Rate, 2017 Avg.: **4.3%**

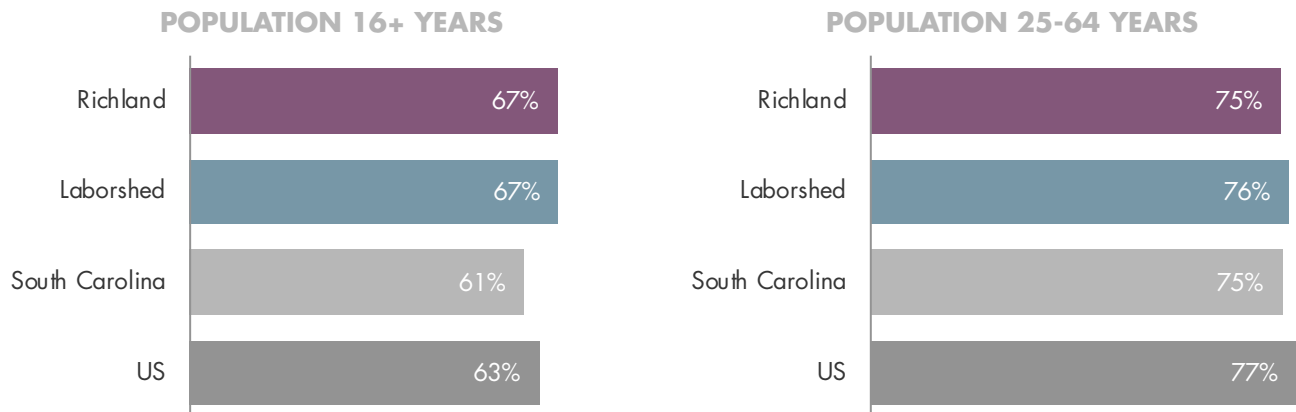
- Profile County
- Laborshed

TALENT HIGHLIGHTS

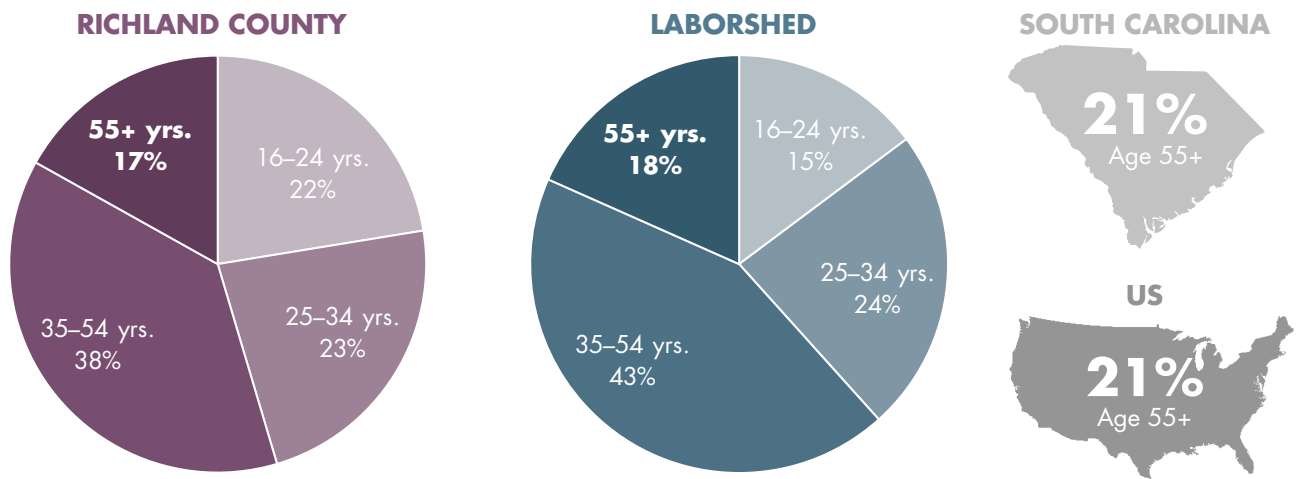
 <p>ACCESS TO A LABOR POOL OF 1.2 MILLION</p>	 <p>59,000+ RESIDENTS COMMUTE OUT OF THE COUNTY FOR WORK EACH DAY</p>
 <p>50,000+ UNEMPLOYED & 200,000+ UNDER-EMPLOYED IN LABORSHED</p>	 <p>INDUSTRIES WITH NET OUTFLOWS INCLUDE: TRANSPORTATION, UTILITIES, MANUFACTURING</p>
 <p>LOCAL OCCUPATIONAL STRENGTHS INCLUDE: STATISTICAL ASSISTANTS, PARALEGALS, & SOCIAL WORKERS</p>	 <p>OCCUPATIONS WITH NET OUTFLOWS INCLUDE: TRACTOR TRAILER DRIVERS, POWER LINE INSTALLERS, EXTRUDING MACHINE SETTERS & OPERATORS</p>

Source: US Bureau of Labor Statistics, Current Population Survey (national figures) and Local Area Unemployment Statistics (state and local); Jobs EQ (underemployment); US Census Bureau, LEHD Origin-Destination Employment Statistics; EMSI 2018.2 – QCEW Employees, Non-QCEW Employees, and Self-Employed.

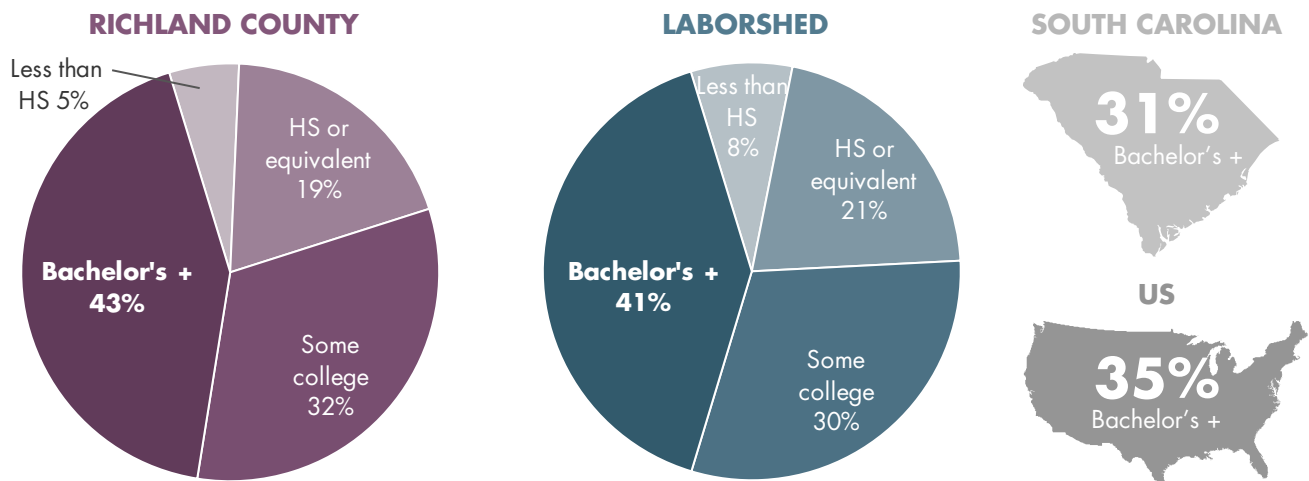
LABOR FORCE PARTICIPATION RATES



AGE DISTRIBUTION OF LABOR FORCE (AGE 16 YEARS+)



EDUCATIONAL ATTAINMENT OF LABOR FORCE (AGE 25-64 YEARS)



Source: (all figures) US Census Bureau, American Community Survey, 5-year averages for the period 2012-2016.

EMPLOYMENT AND EARNINGS BY MAJOR OCCUPATIONAL GROUP, 2017

DESCRIPTION	2017 JOBS		MEDIAN HOURLY EARNINGS		
	County	Laborshed	County	Laborshed	US
Office & Administrative Support	43,612	209,633	\$16.14	\$16.63	\$16.40
Sales & Related	22,605	142,456	\$12.54	\$13.89	\$13.51
Food Prep. & Serving Related	19,325	106,559	\$9.10	\$9.49	\$10.01
Healthcare (Practitioners & Tech.)	16,106	70,067	\$27.38	\$28.49	\$30.97
Business & Financial Operations	13,543	85,305	\$26.91	\$31.48	\$31.70
Education, Training, & Library	13,490	62,316	\$23.33	\$20.91	\$22.58
Management	12,421	71,939	\$41.48	\$48.46	\$42.77
Transportation & Material Moving	12,293	97,643	\$14.00	\$14.75	\$14.86
Protective Service	9,316	34,777	\$15.96	\$16.50	\$18.61
Production	9,298	74,889	\$17.32	\$16.90	\$15.91
Installation, Maintenance, & Repair	8,822	54,665	\$19.58	\$20.79	\$20.19
Personal Care & Service	8,628	46,009	\$10.10	\$10.50	\$10.72
Building & Grounds Cleaning/Maint.	8,228	43,925	\$10.56	\$10.73	\$11.41
Computer & Mathematical	7,994	47,336	\$32.03	\$38.43	\$38.87
Construction & Extraction	7,628	51,918	\$17.69	\$17.16	\$18.45
Healthcare (Support)	6,474	32,671	\$12.23	\$12.01	\$13.30
Community & Social Service	5,805	20,221	\$18.47	\$21.28	\$20.46
Arts, Design, Entertainment, & Media	3,979	21,109	\$17.02	\$18.53	\$19.47
Legal	3,651	11,674	\$27.87	\$30.11	\$37.81
Architecture & Engineering	3,633	20,285	\$30.01	\$34.71	\$36.93
Life, Physical, & Social Science	1,541	6,548	\$28.43	\$30.13	\$31.26
Farming, Fishing, & Forestry	629	4,700	\$11.09	\$13.12	\$11.06

DETAILED OCCUPATIONAL DATA FOR RICHLAND COUNTY, 2017

TOP 10 LOCATION QUOTIENTS (US = 1.00)

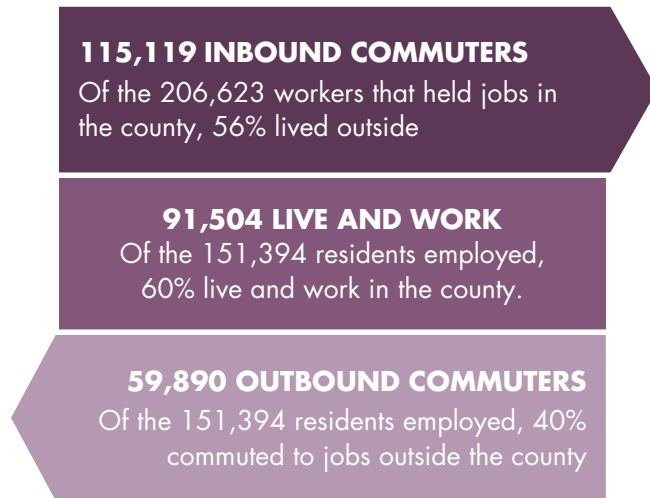
TOP 10 FASTEST-GROWING OCCUPATIONS (#)

SOC CODE	DESCRIPTION	2017 LQ
21-1029	Social Workers, All Other	7.62
27-4012	Broadcast Technicians	6.60
19-2043	Hydrologists	6.15
17-1021	Cartographers & Photogrammetrists	4.71
49-3022	Automotive Glass Installers & Repairers	4.06
51-9196	Paper Goods Machine Workers	3.80
31-1015	Orderlies	3.48
11-9131	Postmasters & Mail Superintendents	3.43
43-9111	Statistical Assistants	3.40
23-2011	Paralegals & Legal Assistants	3.34

SOC CODE	DESCRIPTION	NET CHANGE (2017-22)
35-3021	Comb. Food Prep. & Servers, Incl. Fast Food	509
33-9032	Security Guards	462
29-1141	Registered Nurses	346
39-9021	Personal Care Aides	333
43-4051	Customer Service Representatives	324
25-1099	Teachers, Postsecondary	223
31-1011	Home Health Aides	197
53-7062	Laborers/Freight, Stock, & Material Movers, Hand	175
31-1014	Nursing Assistants	163
51-2092	Team Assemblers	158

Source: EMSI 2018.2 – QCEW Employees, Non-QCEW Employees, and Self-Employed. (Excludes military and unclassified occupations.)
 Note: LQs compare local employment in an occupation or industry with US employment; LQs >1.25 suggest a comparative advantage.

INFLOW/OUTFLOW, 2015
FLOW OF WORKERS TO/FROM THE COUNTY



TOP 10 COMMUTER FLOWS BY COUNTY, 2015
WHERE EMPLOYED RICHLAND RESIDENTS WORK

COUNTY	COUNT	SHARE
1 Richland County, SC	91,504	60.4%
2 Lexington County, SC	26,919	17.8%
3 Greenville County, SC	4,352	2.9%
4 Charleston County, SC	3,172	2.1%
5 Fairfield County, SC	2,145	1.4%
6 Sumter County, SC	1,921	1.3%
7 Kershaw County, SC	1,831	1.2%
8 Spartanburg County, SC	1,756	1.2%
9 York County, SC	1,529	1.0%
10 Orangeburg County, SC	1,232	0.8%
All Other Locations	15,033	9.9%
Total	151,394	100.0%

RICHLAND COUNTY COMMUTER FLOWS FOR SELECT SECTORS, 2015

NAICS CODE	DESCRIPTION	INFLOW	OUTFLOW	NET
48-49	Transportation & warehousing	1,960	4,604	-2,644
22	Utilities	763	1,511	-748
31-33	Manufacturing	9,832	10,407	-575
21	Oil, gas, & mining	79	71	8
11	Agriculture, Forestry, Fishing and	700	592	108
55	Corporate & regional HQs	1,440	1,250	190
61	Education	16,626	15,890	736
71	Arts & entertainment	2,337	1,594	743
51	Information & media	3,872	2,837	1,035
53	Property sales & leasing	3,611	2,373	1,238

RICHLAND COUNTY TOP 10 OCCUPATIONS FOR NET OUTBOUND COMMUTES, 2017

SOC CODE	DESCRIPTION	2017 JOBS	2017 RESIDENT WORKERS	NET
49-9051	Electrical Power-Line Installers and Repairers	61	184	-123
51-3022	Meat, Poultry, and Fish Cutters and Trimmers	72	150	-78
53-7051	Industrial Truck and Tractor Operators	407	482	-75
51-6091	Extrud. & Form. Machine Setters, Ops., & Tend., Synth. & Glass Fibers	70	112	-42
51-3092	Food Batchmakers	60	92	-32
49-9052	Telecommunications Line Installers and Repairers	64	94	-30
37-2021	Pest Control Workers	93	122	-29
53-3032	Heavy and Tractor-Trailer Truck Drivers	1,873	1,901	-28
51-6031	Sewing Machine Operators	70	91	-21
53-1021	Supervisors of Helpers, Laborers, and Material Movers, Hand	223	240	-17

Sources: US Census Bureau, LEHD Origin-Destination Employment Statistics; (bottom table only) EMSI 2018.2 – QCEW Employees, Non-QCEW Employees, and Self-Employed.