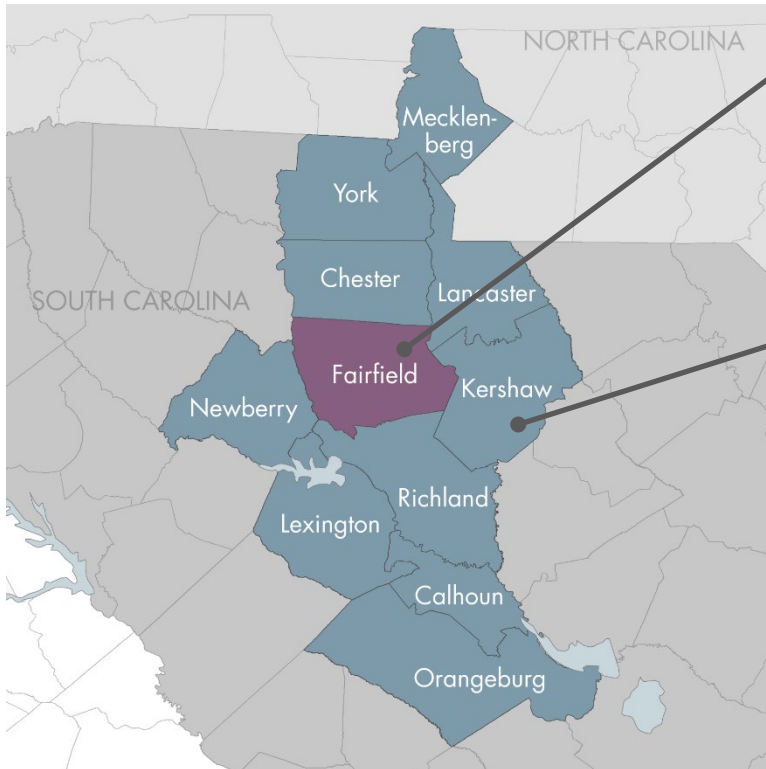




FAIRFIELD COUNTY



FAIRFIELD COUNTY

Civilian Labor Force (CLF): **10,045**
 % Change in CLF, 2016-2017: **0.5%**
 Unemployment Rate, 2017 Avg.: **7.4%**

LABORSHED

Civilian Labor Force (CLF): **1,235,672**
 % Change in CLF 2016-2017: **1.7%**
 Unemployment Rate, 2017 Avg.: **4.3%**

■ Profile County
 ■ Laborshed

TALENT HIGHLIGHTS



ACCESS TO A LABOR POOL OF
1.2 MILLION



6,000+ RESIDENTS COMMUTE
 OUT OF THE COUNTY FOR WORK
 EACH DAY



50,000+ UNEMPLOYED &
200,000+ UNDER-EMPLOYED IN
 LABORSHED



INDUSTRIES WITH NET OUTFLOWS
 INCLUDE: **HEALTHCARE, RETAIL,
 ADMIN. & SUPPORT SERVICES**



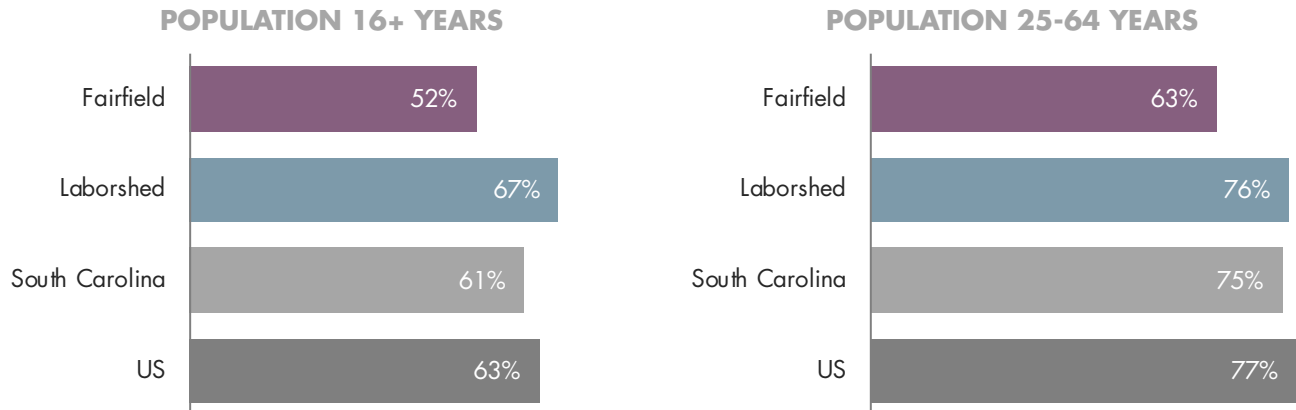
LOCAL OCCUPATIONAL
 STRENGTHS INCLUDE: **NUCLEAR
 PLANT OPERATORS &
 ENGINEERS, OTHER ENERGY
 WORKFORCE**



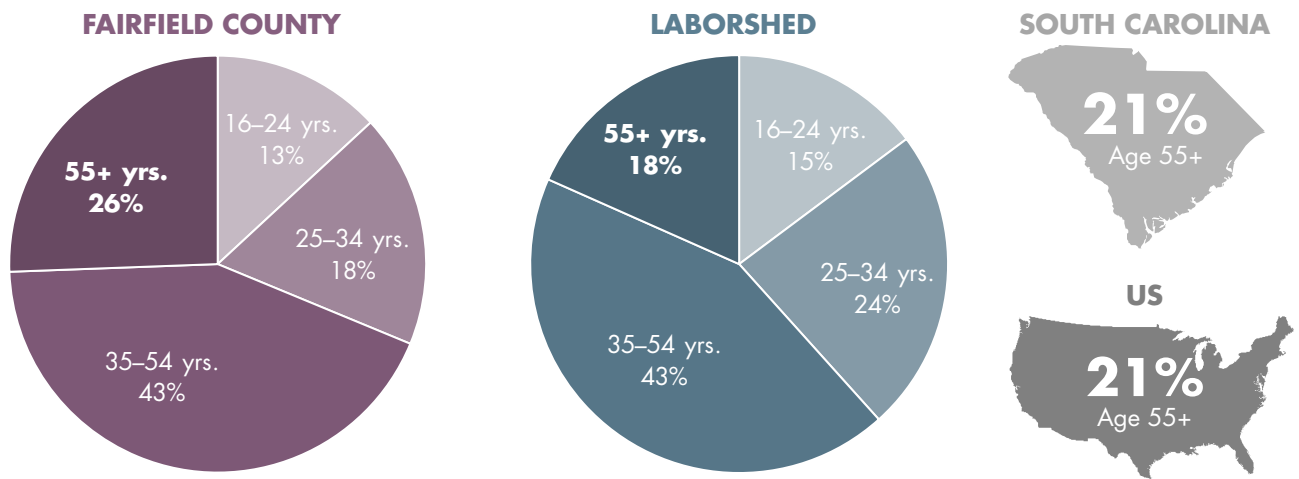
OCCUPATIONS WITH NET
 OUTFLOWS INCLUDE: **RETAIL &
 FOOD SERVICE, CUSTOMER
 SERVICE REPS, REGISTERED
 NURSES**

Source: US Bureau of Labor Statistics, Current Population Survey (national figures) and Local Area Unemployment Statistics (state and local); Jobs EQ (underemployment); US Census Bureau, LEHD Origin-Destination Employment Statistics; EMSI 2018.2 – QCEW Employees, Non-QCEW Employees, and Self-Employed.

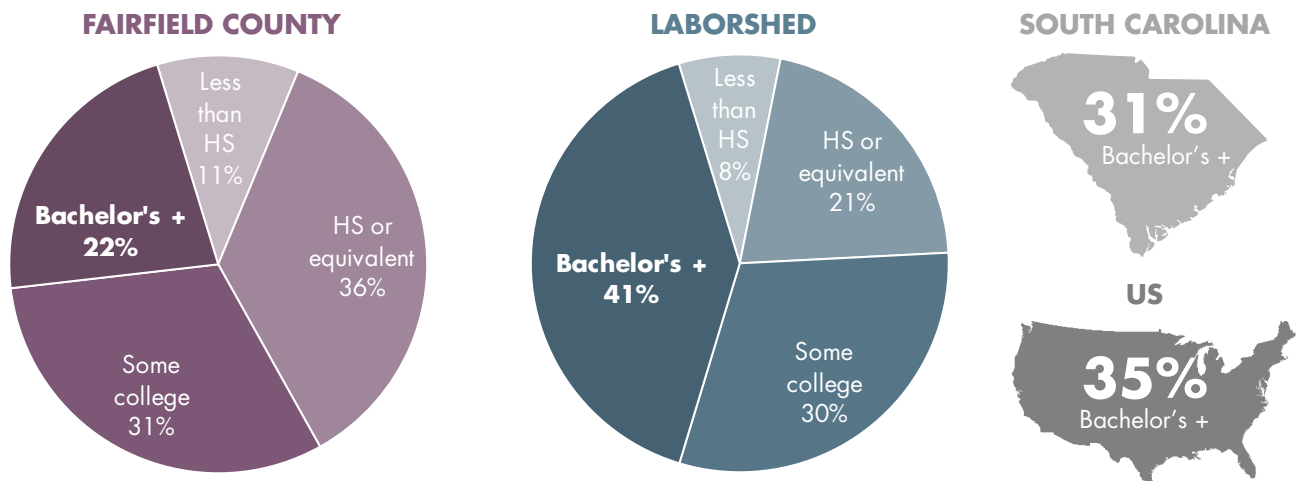
LABOR FORCE PARTICIPATION RATES



AGE DISTRIBUTION OF LABOR FORCE (AGE 16 YEARS+)



EDUCATIONAL ATTAINMENT OF LABOR FORCE (AGE 25-64 YEARS)



Source: (all figures) US Census Bureau, American Community Survey, 5-year averages for the period 2012-2016.

EMPLOYMENT AND EARNINGS BY MAJOR OCCUPATIONAL GROUP, 2017

DESCRIPTION	2017 JOBS		MEDIAN HOURLY EARNINGS		
	County	Laborshed	County	Laborshed	US
Production	1,554	74,889	\$18.84	\$16.90	\$15.91
Construction & Extraction	1,304	51,918	\$16.50	\$17.16	\$18.45
Installation, Maintenance, & Repair	1,171	54,665	\$20.61	\$20.79	\$20.19
Office & Administrative Support	1,107	209,633	\$15.32	\$16.63	\$16.40
Sales & Related	840	142,456	\$12.99	\$13.89	\$13.51
Architecture & Engineering	718	20,285	\$37.30	\$34.71	\$36.93
Transportation & Material Moving	619	97,643	\$14.20	\$14.75	\$14.86
Management	614	71,939	\$42.55	\$48.46	\$42.77
Protective Service	475	34,777	\$15.63	\$16.50	\$18.61
Education, Training, & Library	414	62,316	\$18.21	\$20.91	\$22.58
Business & Financial Operations	341	85,305	\$25.36	\$31.48	\$31.70
Healthcare (Practitioners & Tech.)	333	70,067	\$25.25	\$28.49	\$30.97
Personal Care & Service	319	46,009	\$9.61	\$10.50	\$10.72
Food Prep. & Serving Related	306	106,559	\$8.73	\$9.49	\$10.01
Building & Grounds Cleaning/Maint.	293	43,925	\$9.87	\$10.73	\$11.41
Life, Physical, & Social Science	224	6,548	\$36.37	\$30.13	\$31.26
Healthcare (Support)	197	32,671	\$10.83	\$12.01	\$13.30
Computer & Mathematical	185	47,336	\$31.46	\$38.43	\$38.87
Community & Social Service	106	20,221	\$16.65	\$21.28	\$20.46
Arts, Design, Entertainment, & Media	79	21,109	\$17.49	\$18.53	\$19.47
Farming, Fishing, & Forestry	45	4,700	\$10.44	\$13.12	\$11.06
Legal	30	11,674	\$27.25	\$30.11	\$37.81

DETAILED OCCUPATIONAL DATA FOR FAIRFIELD COUNTY, 2017

TOP 10 LOCATION QUOTIENTS (US = 1.00)

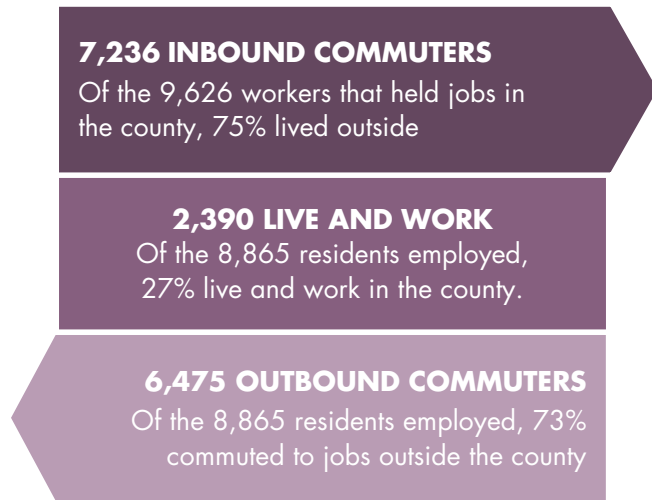
TOP 10 FASTEST-GROWING OCCUPATIONS (#)

SOC CODE	DESCRIPTION	2017 LQ
51-8011	Nuclear Power Reactor Operators	493.69
19-4051	Nuclear Technicians	377.63
17-2161	Nuclear Engineers	191.59
49-9051	Electrical Power-Line Installers & Repairers	41.95
49-9052	Telecomm. Line Installers & Repairers	25.98
49-9081	Wind Turbine Service Technicians	18.96
49-2021	Radio, Cellular, & Tower Equip. Install/Repair	14.47
51-6091	Extruding/Forming Machine, Synth. & Glass Fibers	13.91
47-2011	Boilermakers	9.99
53-7032	Excavating/Loading & Dragline Operators	7.23

SOC CODE	DESCRIPTION	NET CHANGE (2017-22)
49-9051	Electrical Power-Line Instal. & Repairers	215
47-2061	Construction Laborers	204
51-2092	Team Assemblers	167
41-2031	Retail Salespersons	123
49-9052	Telecomm. Line Installers & Repairers	111
47-2073	Operating Eng. & Other Constr. Equip. Operators	85
47-1011	FirstLine Supvsr., Constr. Trades & Extract.	73
51-4041	Machinists	56
11-1021	General & Operations Managers	53
49-1011	FirstLine Supvsr., Mech., Install, & Repair	53

Source: EMSI 2018.2 – QCEW Employees, Non-QCEW Employees, and Self-Employed. (Excludes military and unclassified occupations.)
 Note: LQs compare local employment in an occupation or industry with US employment; LQs >1.25 suggest a comparative advantage.

INFLOW/OUTFLOW, 2015
FLOW OF WORKERS TO/FROM THE COUNTY



TOP 10 COMMUTER FLOWS BY COUNTY, 2015
WHERE EMPLOYED FAIRFIELD RESIDENTS WORK

COUNTY	COUNT	SHARE
1 Richland County, SC	2,620	29.6%
2 Fairfield County, SC	2,390	27.0%
3 Lexington County, SC	807	9.1%
4 Greenville County, SC	428	4.8%
5 Newberry County, SC	289	3.3%
6 York County, SC	266	3.0%
7 Chester County, SC	256	2.9%
8 Spartanburg County, SC	225	2.5%
9 Kershaw County, SC	173	2.0%
10 Charleston County, SC	102	1.2%
All Other Locations	1,309	14.8%
Total	8,865	100.0%

FAIRFIELD COUNTY COMMUTER FLOWS FOR SELECT SECTORS, 2015

NAICS CODE	DESCRIPTION	INFLOW	OUTFLOW	NET
62	Healthcare	556	1,064	-508
44-45	Retail Trade	467	929	-462
56	Administrative services	218	651	-433
72	Restaurants, bars, & hotels	192	615	-423
90	Government	426	757	-331
52	Finance & insurance	51	325	-274
48-49	Transportation & warehousing	39	258	-219
23	Construction	188	328	-140
81	Personal & other services	78	159	-81
53	Property sales & leasing	9	71	-62

FAIRFIELD COUNTY TOP 10 OCCUPATIONS FOR NET OUTBOUND COMMUTES, 2017

SOC CODE	DESCRIPTION	2017 JOBS	2017 RESIDENT WORKERS	NET
43-4051	Customer Service Representatives	100	199	-99
35-3021	Combined Food Prep. and Serving Workers, Incl. Fast Food	128	222	-94
29-1141	Registered Nurses	105	190	-85
37-2011	Janitors & Cleaners, Excl. Maids & Housekeeping Cleaners	111	171	-60
53-7062	Laborers and Freight, Stock, and Material Movers, Hand	197	254	-57
41-2011	Cashiers	214	255	-41
43-5081	Stock Clerks and Order Fillers	84	115	-31
43-1011	Supervisors of Office and Administrative Support Workers	102	130	-28
41-2031	Retail Salespersons	247	274	-27
37-3011	Landscaping and Groundskeeping Workers	92	116	-24

Sources: US Census Bureau, LEHD Origin-Destination Employment Statistics; (bottom table only) EMSI 2018.2 – QCEW Employees, Non-QCEW Employees, and Self-Employed.